

Fantail Darter

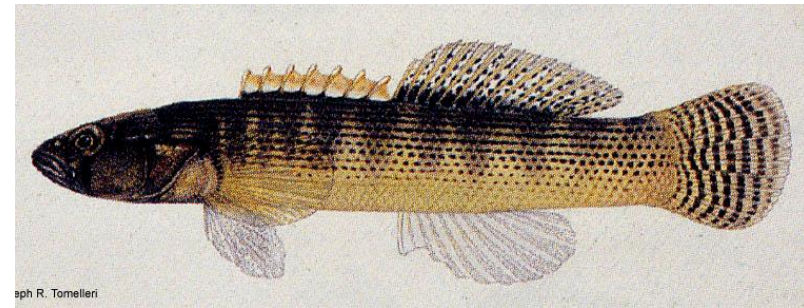
Etheostoma flabellare



<http://www.cnr.vt.edu/efish/families/fantaildart.html>

Characteristics

- slender darter w/ or w/o 8-15 indistinct dark cross-bars on back
- gold knobs on tips of dorsal spines
- 2nd dorsal and caudal fins strongly barred
- lower jaw usually projects beyond upper jaw
- sides streaked w/ dark, horizontal lines
- broadly joined branchiostegal membranes
- pointed snout, unscaled nape; teardrop thin or absent
- incomplete lateral line, usually ending beneath soft dorsal fin; rounded tail



aph R. Tomelleri

http://nhm.ku.edu/fishes/Fishes_in_Kansas/e%20flabellare.html

Ecology and Distribution

- found in rocky riffles of creeks and small-medium rivers
- widespread & common in FCW - often in association with Johnny darters