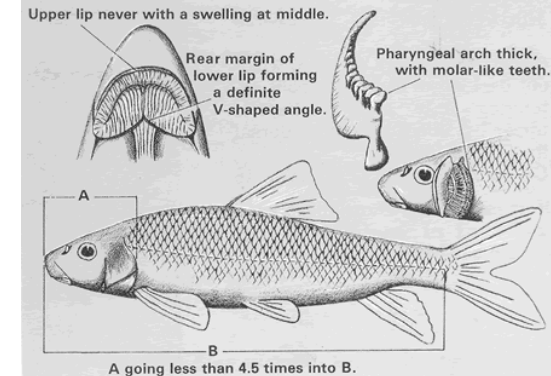


River Redhorse

Moxostoma carinatum



Characteristics

- robust, long-slender body; large horizontal mouth;
- thick plicate lips; (i.e., ridges rather than papillae of *Catostomus*)*
- fewer than 50 lateral line scale; dorsal fins rays 12 or 13 (14 – 15 in silver redhorse)
- large head (~ 25% standard length); **red caudal fin**; yellow to orange paired fins
- V-shaped angle on rear margin of lower lip; upper lip w/out swelling
- crescent shaped dark spots on scales; overall color olive, often w/ brassy tinge

Ecology and Distribution

- sandy to rocky pools & runs of FC main stem & large tributaries
- large, molar-like pharyngeal teeth used to crush mollusks
- disappearing across southern part of its range in the U.S.